

# Triple Offset Butterfly Valves For Hydrofluoric Acid Applications

## FIRESAFE DESIGN

Fire tested in accordance with  
API 607 / ISO 10497

## REPEATABLE ISOLATION

Non-friction seat and seal ensures  
repeatable sealing performance

## FIELD REPLACEABLE SEAT AND SEAL

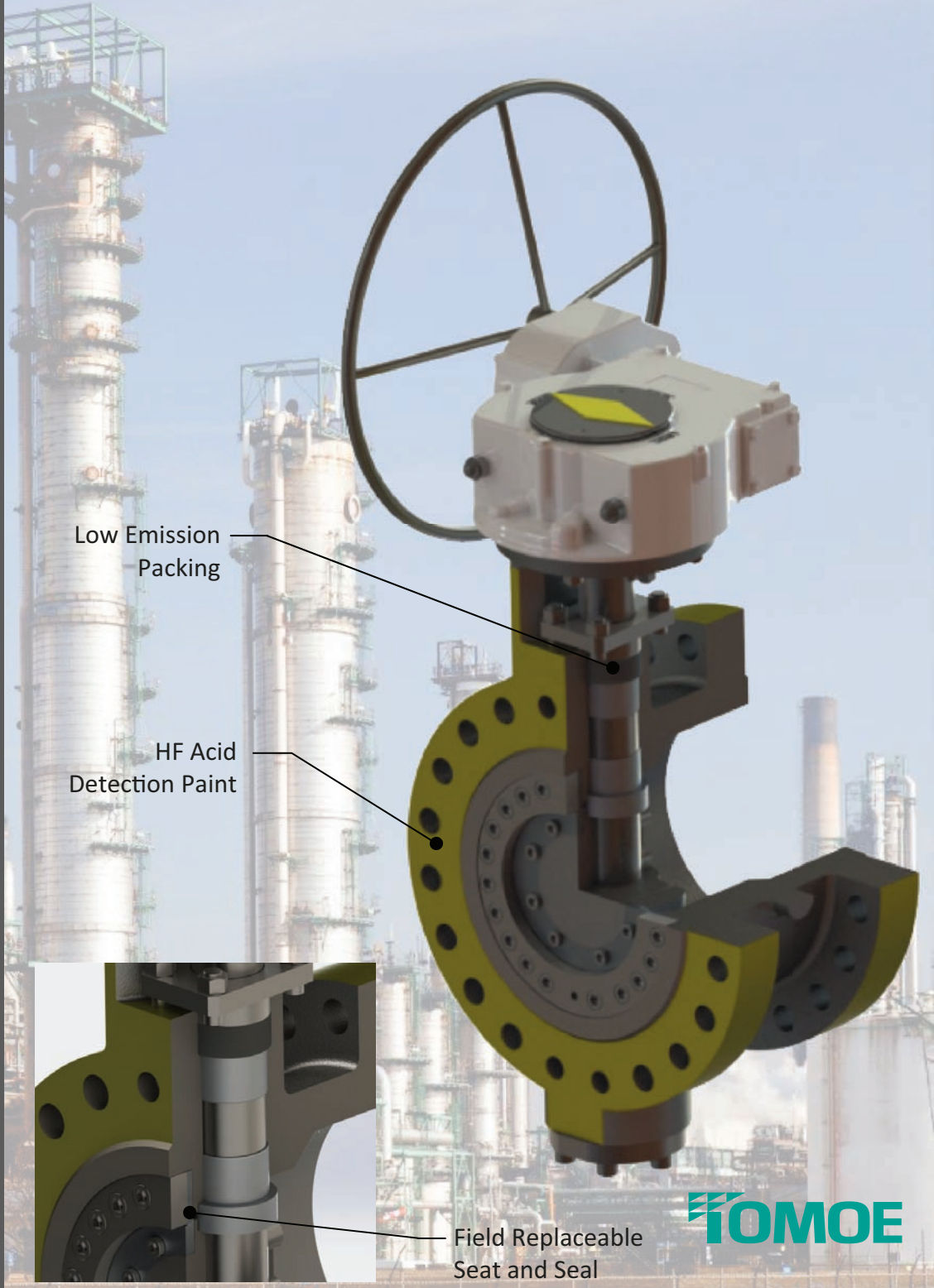
Ensures maintenance costs and plant  
downtime are kept to a minimum

## LOW FUGITIVE EMISSIONS

Valve design tested and certified in  
accordance with ISO 15848-1

## UOP COMPLIANT

Valve design meets the requirements  
of UOP Piping Classes: HF1, HF2, HF10  
and HF20, 2 inch to 24 inch Class 300,  
for use in HF Alkylation service

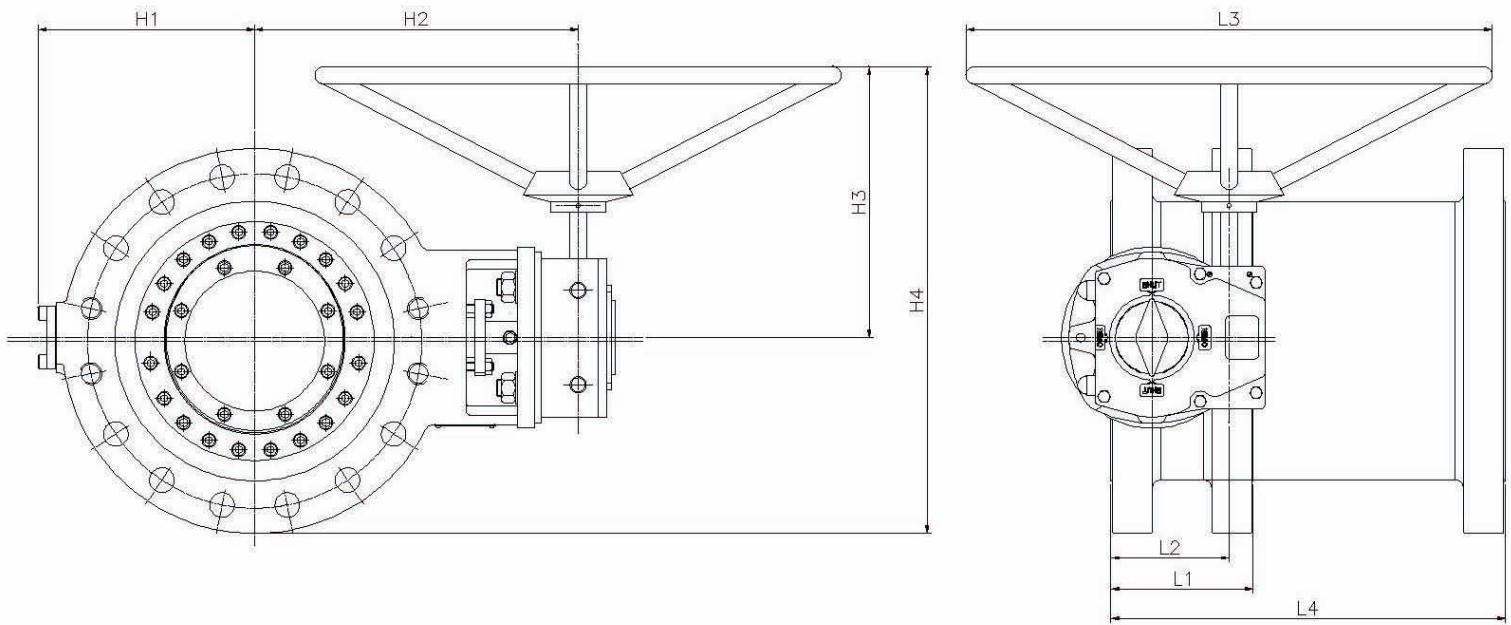


Low Emission  
Packing

HF Acid  
Detection Paint

Field Replaceable  
Seat and Seal





### DIMENSIONS AND WEIGHTS

VALVE SIZE (in)	DIMENSIONS								SHORT PATTERN				LONG PATTERN (NOTE 1)							
	H1		H2		H3		H4		L1		WEIGHT		L2		L3		L4		WEIGHT	
	mm	in	mm	in	mm	in	mm	in	mm	in	Kg	Lb	mm	in	mm	in	mm	in	Kg	Lb
2	107	4.21	179	7.05	152	5.98	241	9.49	108	4.25	20	44	61	2.40	125	4.92	216	8.50	26	57
3	127	5.00	186	7.32	152	5.98	262	10.31	114	4.49	25	55	67	2.64	125	4.92	282	11.10	31	68
4	151	5.94	229	9.02	169	6.65	301	11.85	127	5.00	36	79	83	3.27	200	7.87	305	12.01	43	95
6	199	7.83	311	12.24	223	8.78	387	15.24	140	5.51	56	123	103	4.06	300	11.81	403	15.87	78	172
8	218	8.58	335	13.19	279	10.98	474	18.66	152	5.98	90	198	134	5.28	457	17.99	419	16.50	117	258
10	251	9.88	375	14.76	314	12.36	541	21.30	165	6.50	135	298	137	5.39	610	24.02	457	17.99	194	428
12	296	11.65	437	17.20	391	15.39	662	26.06	178	7.01	203	448	208	8.19	610	24.02	502	19.76	271	597
14	331	13.03	464	18.27	498	19.61	694	27.32	190	7.48	268	591	214	8.43	610	24.02	762	30.00	466	1027
16	377	14.84	531	20.91	560	22.05	888	34.96	216	8.50	374	825	205	8.07	457	17.99	838	32.99	651	1435
18	407	16.02	593	23.35	560	22.05	925	36.42	222	8.74	506	1116	260	10.24	457	17.99	914	35.98	960	2116
20	440	17.32	636	25.04	582	22.91	994	39.13	229	9.02	598	1319	322	12.68	457	17.99	991	39.02	1157	2551
24	512	20.16	706	27.80	665	26.81	1132	44.57	267	10.51	944	2081	334	13.15	356	14.02	1143	45.00	1710	3770

Note 1: long pattern dimensions (in acc. with ASME B16.10) match face to face of class 300 plug and gate valves

### HF Alkylation Valve Applications

- Acid Circulating Pump Discharge/Suction
- Fresh Acid Pump Discharge/Suction
- Settle Acid Pump Discharge/Suction
- Feed Line
- Olefin feed to reactors
- Acid Settler Drain
- Alkylation Reactor Drain
- Acid dump drum inlet
- Acid unloading line
- Rapid acid transfer

Tomoe Valve Ltd  
 Clearwater Road  
 Queensway Meadows Ind. Estate  
 Newport. NP19 4ST  
 United Kingdom  
 Tel: +44 (0)1633 274707  
 Email: sales@tomoe.co.uk Web: www.tomoeurope.co.uk

Tomoe USA Inc  
 15700 International Plaza Dr.  
 Suite 150  
 Houston, Texas 77032  
 USA  
 Tel: +1 281 358 7571  
 Email: sales@tomoevalveusa.com Web: www.tomoevalveusa.com

